

[View this email in your browser](#)



## North Somerset Arts

**Newsletter**  
April 2024

### NSA News

#### Members' Exhibition 2024

The deadline of members to sign up to take part in the exhibition is **12 noon, Wednesday 17th April**. The link to the online form can be found in the Members Area of our website and in recent emails. If you have any questions, or difficulty completing the form, please email [hello@northsomersearts.org](mailto:hello@northsomersearts.org).

---

#### **ArtsMeet - 25th April 2024** **Transforming passion into profit - the joys and pitfalls of business for creatives.**

Our first ArtsMeet of 2024 will be on Thursday 25th April 2024, venue TBC.

Join us for an enlightening session with our esteemed panel of artists - Sarah Boden, Susannah Crook, Claire Hall, and Renée Kilburn. They will share their invaluable insights on turning artistic passion into a thriving business. From navigating social media and marketing strategies to the dynamics of teaching, artist collaborations, and entering open calls, our panel will cover it all. Have burning questions? Our experts are ready to provide answers. Whether you're just starting out on your artistic journey or already established, this ArtsMeet is your opportunity to gain new perspectives and share experiences.

Don't miss this chance to be inspired, network, and socialise with fellow creatives.

Email [hello@northsomersearts.org](mailto:hello@northsomersearts.org) to register your interest and get updates on the venue and timings. Tickets will be available on the door: Members get free entry, Non-members £5.

---

# NORTH SOMERSET ARTS

May 17, 18 & 19 2024

- Quality local art for sale
- Artist talks and demonstrations
- Children's "pocket money" stall
- Fun creative activities



## MEMBERS' EXHIBITION



### OPEN TIMES:

Fri 17th: 6pm-8pm Preview (all welcome)

Sat 18th: 10am - 6pm

Sun 19th: 10am - 3pm

**Failand Village Hall**  
Oxhouse Lane  
Failand  
N Somerset  
BS83TS



## Events

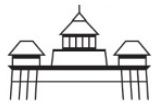


Caroline Cunningham is working on a Charity Needlepoint tapestry "Marguerite" to raise funds for Clevedon Community Centre. It is based on their stained glass windows. Each person who would like to take part pays £10 for an individual hour long teaching/stitching session, with all funds going to the centre. When finished it will be framed & auctioned in August during their 75th anniversary open weekend. All the names of stitchers will be printed on the back of the work.

If interested, please email Caroline at [cunningstitches@icloud.com](mailto:cunningstitches@icloud.com).

# MEMBERS' SHOW & SELL

CLEVEDON



ART CLUB

BROWSE & BAR  
(members plus one only)  
4 APRIL 6-8pm

SHOW & SELL  
5-9 APRIL 2024  
10am-4pm daily

FREE ENTRY  
refreshments  
available

originals,3D,prints,cards

SATURDAY & SUNDAY  
demonstrations &  
children's activity area

SCIENCE ATRIUM  
Clevedon School  
Valley Rd  
BS21 6AH

[clevedonartclub.co.uk](http://clevedonartclub.co.uk)



CHEERFULLNESS by JULIE MAINSTONE

COMMON GROUND artists

# REAL REMEMBERED IMAGINED

EXHIBITION PRIOR Shop, Cabot Circus, Bristol  
6th - 18th April 2024

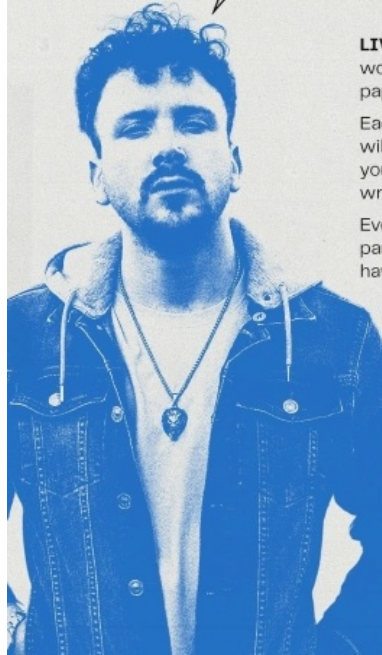


Save the date..... Featuring three of our NSA artists, Sarah Boden, Claire Hall and Susannah Crook, with Claire Orr, Louise Wilmot and Yvonne Elston.

# LIVE wire

## Poetry Workshops

The Theatre Shop, Clevedon Triangle Centre, BS21 6HX



**LIVEwire Poetry** presents a trio of writing workshops this spring! Are you eager to put pen to paper? Have ideas that need sharpening?

Each led by a different guest facilitator, these sessions will create a safe and supportive space to explore your poetic voice, whether you're an experienced writer or just want to try something new.

Everybody is welcome, but we particularly encourage participants who identify as working-class or as having a working-class background.

### Workshop 1

led by Danny Carlo Pandolfi (aka Craft-D)

Saturday 16 March 2024

12-2pm GMT

Pay As You Feel: £3 / £5 / £7

Workshop 2 - 20th April // Workshop 3 - 11th May

Find out more at

[livewirepoetry.org/workshops](http://livewirepoetry.org/workshops)



Flax Bourton Church



# EARTH DAY



## Saturday 20th April 10-4



Treecology - Art6Explore Exhibition



My Favourite Tree-Community Arts Exhibition

Free Community Eco-Art activities including



pressed flowers, bat craft and clay pinch pots



Refreshments at the Relax@Flax Cafe

Bioblitz, make a pond, put up a bat box



and planting in the Churchyard



Natural History info stands

Local Produce - Honey, Veg,

Candles, Soaps, Upcycled bags and Crafts

Eco printing and Spinning Threads demonstrations



Book, Seed and Plant Exchange

Home Energy Advice



New stained glass window



The Barberettes - Acapella Group 3.45pm



Free event-  
come and join  
in the fun!



ART GALLERY & STUDIO

by Aya Kubish

OPENING EXHIBITION  
BETWEEN THE LINES

22nd April - 20th May 2024

AGA KUBISH ARE, MARTA HUTT, GAIL REID,  
IAN SHIPTON, FRANK HARWOOD,  
RUTH WHITE, SUSANNAH CROOK,  
RUTH BAKER, ANNA BRZEZINSKA

PRIVATE VIEW 20th April, from 6 pm

4 Walliscote Road, Weston-super-Mare, BS23 1UG

[www.agakubish.com](http://www.agakubish.com)

[studio@agakubish.com](mailto:studio@agakubish.com)



1 GARDEN - 2 ARTISTS

STEPHANIE GAY - CHI-YIEN SNOW

FEB 15 2024 - APR 30 2024

PREVIEW  
EVENT  
FEB 15  
5 - 7 PM

THE  
SQUARE  
CLUB

S  
Q  
U  
A  
R  
E

BERKELEY  
SQUARE  
BRISTOL

North Somerset Arts silk artist Stephanie Gay has a new collaborative exhibition with multi-media artist Chi-Yien Snow opening at the Square Club in Bristol on the 15th February. The exhibition is inspired by the University of Bristol Botanic Garden and will feature vibrant botanical artwork in Stephanie & Chi-Yien's contrasting styles. The exhibition is open 7 am to 9 pm (9-4 Sundays) until the end of April and entry is free.

---

If you have anything to include in the next newsletter please send it to [newsletter@northsomersearts.org](mailto:newsletter@northsomersearts.org) before 28th April.

Follow us on [Instagram](#), [Twitter](#) and [Facebook](#)

---



---

*Copyright © 2023, NORTH SOMERSET ARTS, All rights reserved.*  
You are receiving this email because you are a member or/and have supported NSA, thank you.

**Our mailing address is:**

C/O 4 Charterhouse Close, Nailsea, BS48 4PU

Want to change how you receive these emails?

You can [update your preferences](#) or [unsubscribe from this list](#)

This email was sent to <<Email Address>>

[why did I get this?](#) [unsubscribe from this list](#) [update subscription preferences](#)

North Somerset Arts · c/o 4 Charterhouse Close · Nailsea, North Somerset BS48 4PU · United Kingdom

